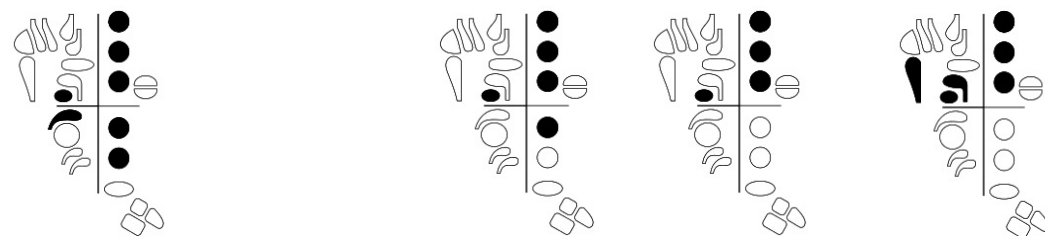
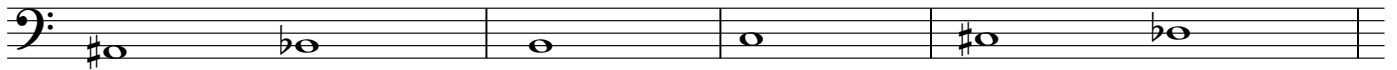
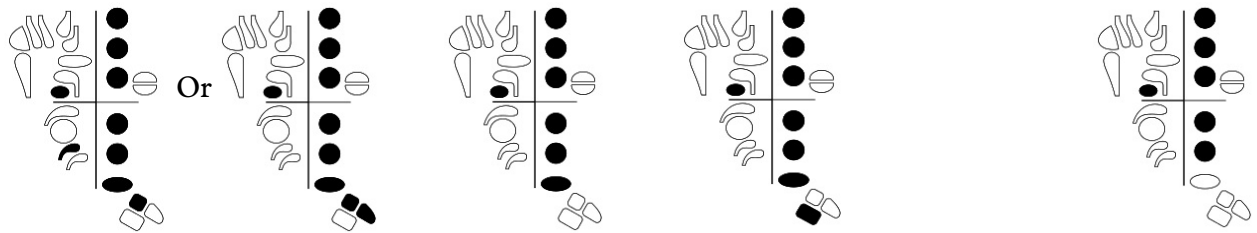
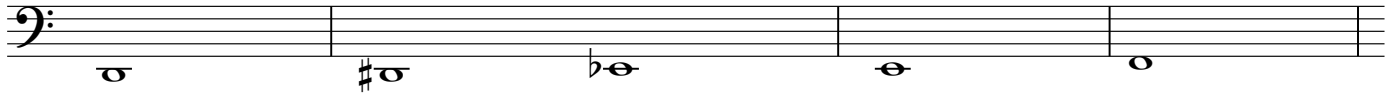
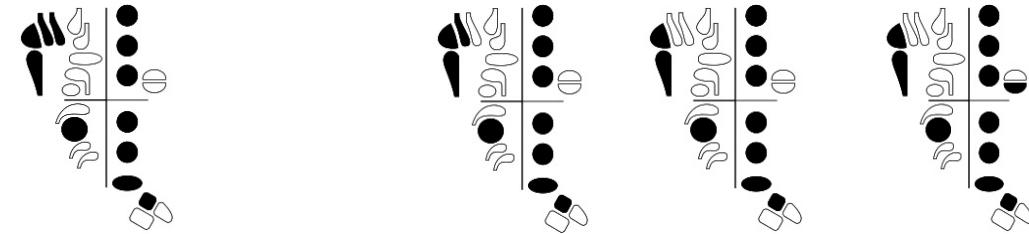
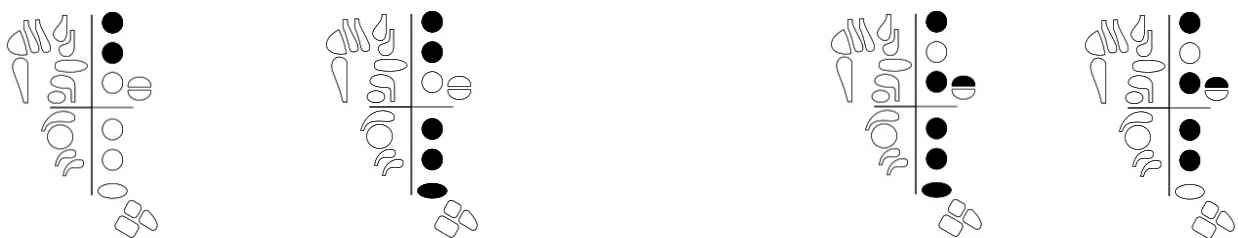
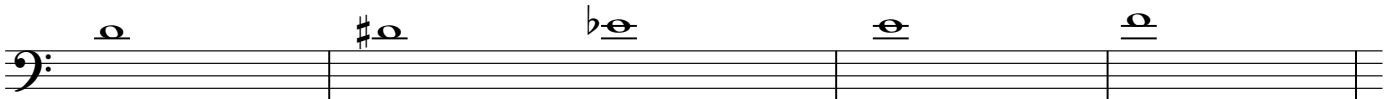
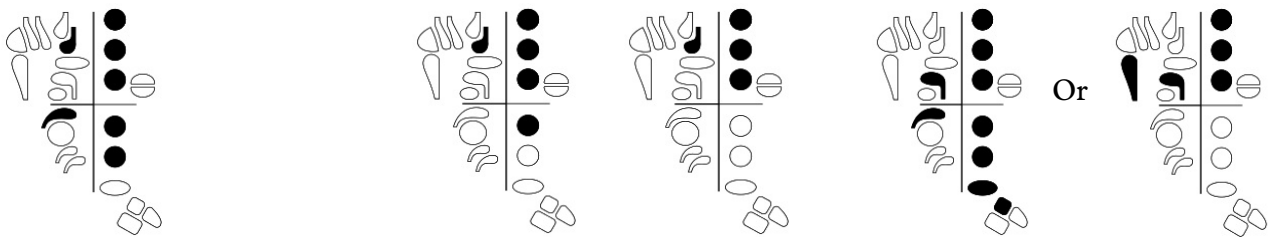
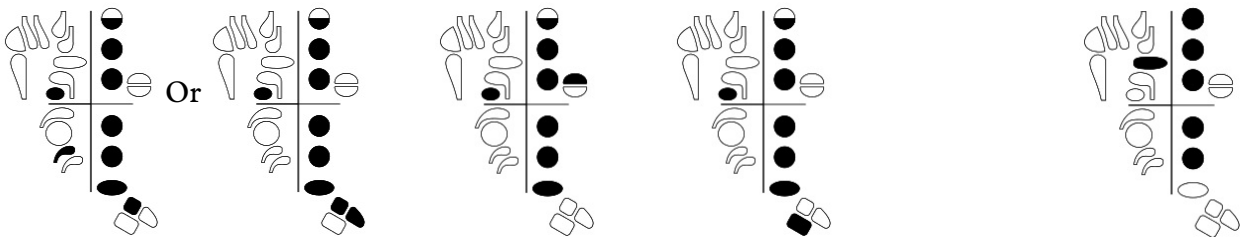
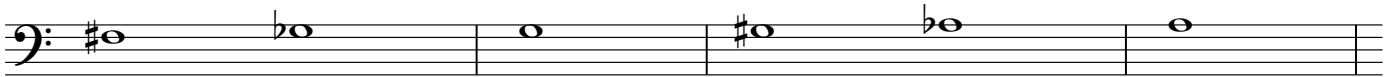
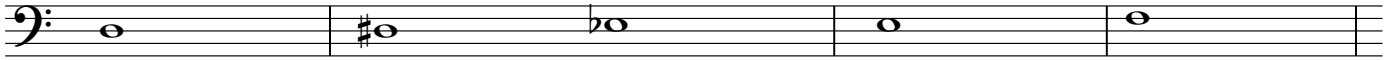


# Bassoon Fingering Chart

Dr. Stephanie Patterson





#b    b |    #    b    b

Diagram 1: #b (F#m) - Diagram 2: b (Fm) - Diagram 3: | (F) - Diagram 4: # (F#) - Diagram 5: b (F) - Diagram 6: b (F)

#b    b |    b    #b    b

Diagram 1: #b (F#m) - Diagram 2: b (Fm) - Diagram 3: | (F) - Diagram 4: b (F) - Diagram 5: #b (F#m) - Diagram 6: b (Fm) - Diagram 7: Or - Diagram 8: b (Fm)

b    #b    b |    b    b

Diagram 1: b (F) - Diagram 2: #b (F#m) - Diagram 3: Or - Diagram 4: b (F) - Diagram 5: Or - Diagram 6: b (F) - Diagram 7: b (F) - Diagram 8: b (F)